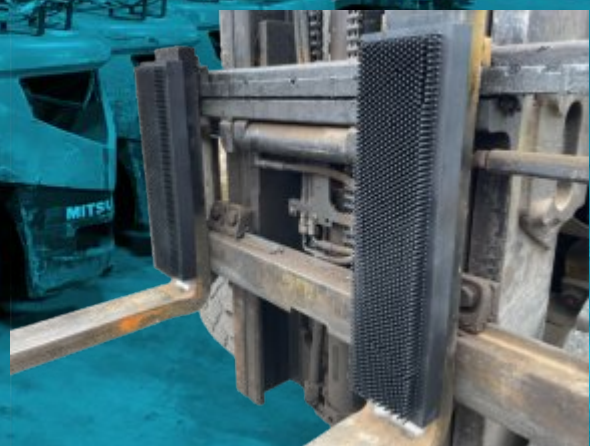


Load Protection Shock Absorber

Model - TAG-PSA

The Forklift Load Protection Shock Absorber is a magnetic block designed for attaching to the upright section of the fork, to reduce damage associated with forks entering into loads & resulting impact damage with the rear face of the fork.



PRODUCT VARIATIONS

Model	Length (mm)	Width (mm)	Depth (mm)
TAG-PSA-540/125/50	540	125	50
TAG-PSA-450/100/50	450	100	50
TAG-PSA-420/125/50	420	125	50
TAG-PSA-400/50/50	500	50	50

Standard Features

- Easy to install - Magnetically attached
- Copolymer rubber design to reduce damage to goods
- 3mm fibre fingers
- Temperature range -40 / 100 Celsius
- Only 30mm lost load centre

